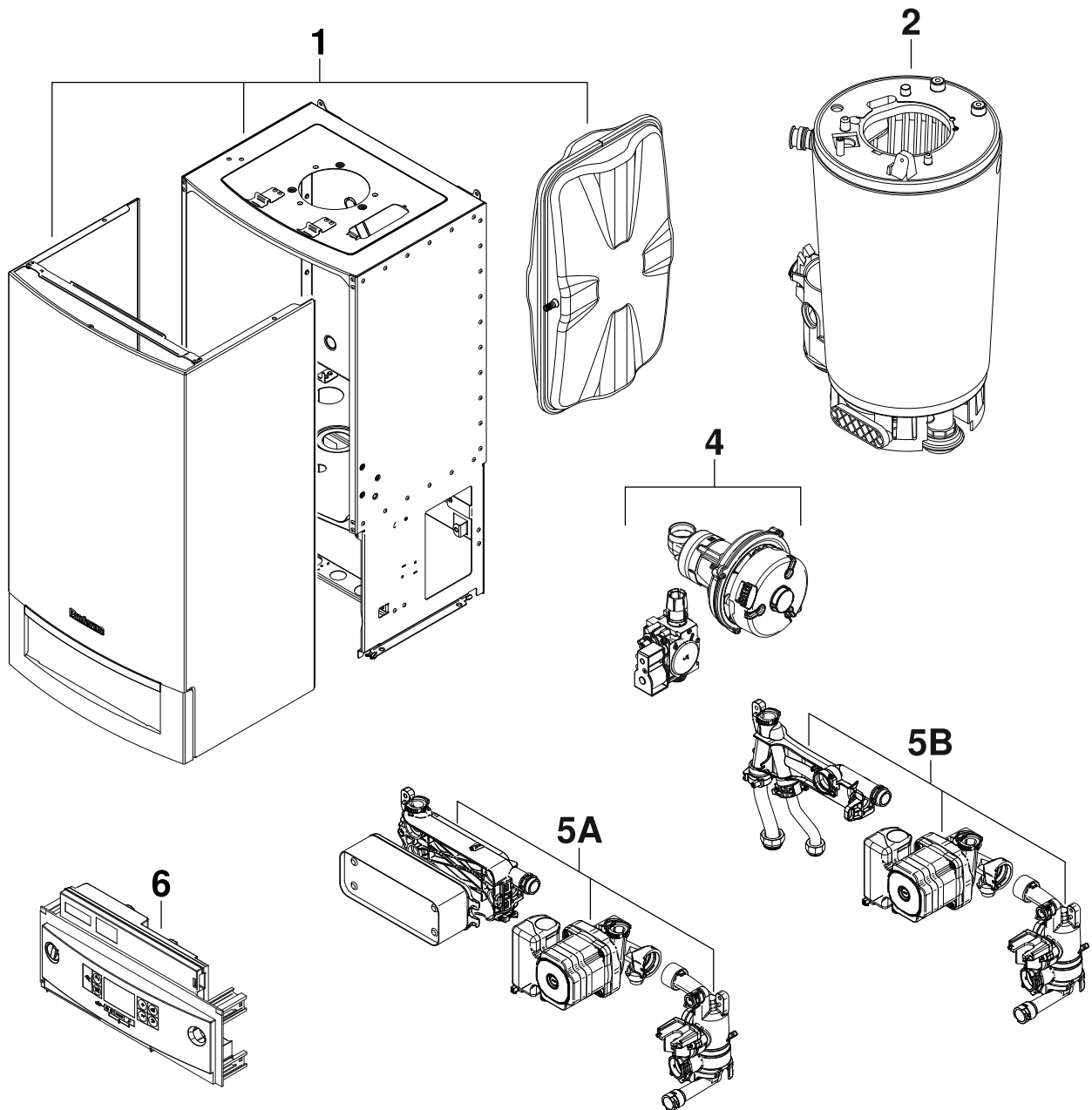


GB072 14-24 (K)



8738890821.AA/G

[de] Wichtige Hinweise zur Installation/Montage

Die Installation/Montage muss durch eine für die Arbeiten zugelassene Fachkraft unter Beachtung der geltenden Vorschriften erfolgen.

[en] Important notes on installation/assembly

The installation/assembly must be carried out by a qualified contractor, following these instructions and in compliance with the applicable regulations.

[fr] Instructions importantes pour l'installation/le montage

L'installation/le montage doit être effectué(e) par un spécialiste qualifié pour les opérations concernées et dans le respect de la présente notice et des prescriptions applicables.

[bg] Важни указания във връзка с инсталацията/монтажа

Инсталацията/монтажът трябва да се извършва от лицензиран за работите специалист в съответствие с настоящото ръководство и с приложимите разпоредби.

[cs] Důležité pokyny k instalaci/montáži

Instalaci/montáž musí při dodržení pokynů uvedených v tomto návodu a platných předpisů provést odborný pracovník s příslušným oprávněním pro tyto práce.

[da] Vigtige anvisninger til installationen/monteringen

Installationen/monteringen skal foretages af en godkendt installatør under overholdelse af denne vejledning og de gældende forskrifter.

[el] Σημαντικές υποδείξεις για την εγκατάσταση/συναρμολόγηση

Η εγκατάσταση/τοποθέτηση πρέπει να ανατίθεται σε εκπαιδευμένο για τις συγκεκριμένες εργασίες τεχνικό προσωπικό με τήρηση αυτών των οδηγιών καθώς και των σχετικών προδιαγραφών.

[es] Indicaciones importantes para instalación/montaje

La instalación/el montaje debe realizarla personal especializado que esté autorizado para realizar estos trabajos y que tenga en cuenta estas instrucciones y la normativa vigente.

[et] Olulised juhised paigaldamiseks/montaažiks

Paigaldamist/montaaži tohib läbi viia vaid selleks volitusi omav spetsialist, arvestades kehtivaid nõudeid.

[nl-BE] Belangrijke aanwijzingen betreffende de installatie/montage

De installatie/montage moet worden uitgevoerd door een voor de werkzaamheden geautoriseerde installateur rekening houdend met deze handleiding en de geldende voorschriften.

[fi] Tärkeitä asennus- ja kokoonpano-ohjeita

Näihin töihin hyväksytyt ammattiasentajan pitää suorittaa asennus- ja kokoonpanotyöt voimassa olevien määräysten mukaisesti.

[hu] Fontos tudnivalók az installálás/szereléshez

A telepítést/szerelést egy, a munkálatokra felhatalmazott szakembernek kell végeznie, jelen utasítás és az érvényes előírások figyelembevételével.

[it] Avvertenze importanti per l'installazione/il montaggio

L'installazione/il montaggio deve aver luogo ad opera di una ditta specializzata ed autorizzata in osservanza di queste istruzioni e delle direttive vigenti.

[ka] მნიშვნელოვანი მითითებები ინსტალაციისთვის/მონტაჟისთვის

ინსტალაცია/მონტაჟი უნდა განხორციელდეს საშუალებისთვის დამკვეთი კვალიფიციური პერსონალის მიერ, მოქმედი განაწესის დაცვით.

[lt] Svarbios instaliavimo ir (arba) montavimo nuorodos

Instaliavimo / montavimo darbus, laikydamiės šios instrukcijos reikalavimų ir galiojančių taisyklių, privalo atlikti šioms darbams įgalioti specialistai.

[lv] Svarīgi norādījumi par iekārtas uzstādīšanu / montāžu

Uzstādīšanu/montāžu jāveic atbilstošajiem darbiem sertificētam speciālistam, ievērojot šo instrukciju un spēkā esošos noteikumus.

[nl] Belangrijke aanwijzingen betreffende de installatie/montage

De installatie/montage moet door een erkend installateur volgens de geldende voorschriften worden uitgevoerd.

[no] Viktig informasjon om installasjon/montering

Installasjonen/monteringen skal gjennomføres av autoriserte installatører, og installasjonsanvisningen samt gjeldende forskrifter skal følges.

[pl] Ważne wskazówki dotyczące instalacji/montażu

Instalację/montaż powinien wykonać specjalista uprawniony do tego typu prac z uwzględnieniem informacji podanych w niniejszej instrukcji oraz aktualnie obowiązujących przepisów.

[pt] Indicações importantes relativas à instalação/montagem

A instalação/montagem deve ser efectuada por um técnico autorizado para os trabalhos, respeitando este manual e as prescrições válidas.

[ro] Indicații importante privind instalarea/montajul

Instalarea/montajul trebuie realizate de către un specialist autorizat pentru lucrările respective, respectându-se prezentele instrucțiuni și prescripțiile valabile.

[ru] Важные указания по подключению/монтажу

Подключение/монтаж должны выполнять только специалисты, имеющие допуск к выполнению таких работ, при соблюдении требований этой инструкции и действующих норм и правил.

[sk] Dôležité pokyny týkajúce sa inštalácie/montáže

Inštaláciu/montáž musí vykonať odborný personál, ktorý má oprávnenie pre výkon týchto prác, pričom musí dodržiavať pokyny uvedené v tomto návode a platné predpisy.

[sl] Pomembni napotki za namestitvev/montažo

Inštalacijo/montažo lahko izvede samo pooblaščen strokovnjak ob upoštevanju teh navodil in veljavnih predpisov.

[sr] Važna uputstva za ugradnju i montažu

Ovu instalaciju/montažu moraju da obave stručna lica koja su ovlašćena za obavljanje takvih radova u skladu sa ovim uputstvom i važećim propisima.

[sv] Viktiga anvisningar för installation/montering

Installationen/monteringen måste utföras av en behörig och tekniskt utbildad person enligt denna anvisning samt gällande föreskrifter.

[tr] Kurulum/Montaj ile ilgili önemli uyarılar

Kurulum/montaj, bu çalışmalarını yapmasına müsaade edilen uzman kişiler tarafından işbu kılavuz ve geçerli yönetmelikler dikkate alınarak yapılmalıdır.

[uk] Важливі вказівки щодо установки/монтажу

Встановлення/монтаж повинні виконувати фахівці, що допущені до виконання таких робіт, із дотриманням цієї інструкції та діючих приписів.

[zh] 安装方面的重要提示

安装和组装工作必须由经过许可的专业人员进行, 同时必须遵守本说明书和现行法规的相关要求

[ar] ملاحظات هامة للتركيب/التجميع
يجب أن يتم التركيب/التجميع من قبل متخصص مصرح له بالعمل، مع مراعاة اللوائح السارية.

[fa] تذکرات مهم درباره نصب/مونتاژ
نصب/مونتاژ باید توسط فردی حرفه ای که مجاز به انجام این کار است، و همچنین با توجه کامل به مقررات مربوطه انجام شود.

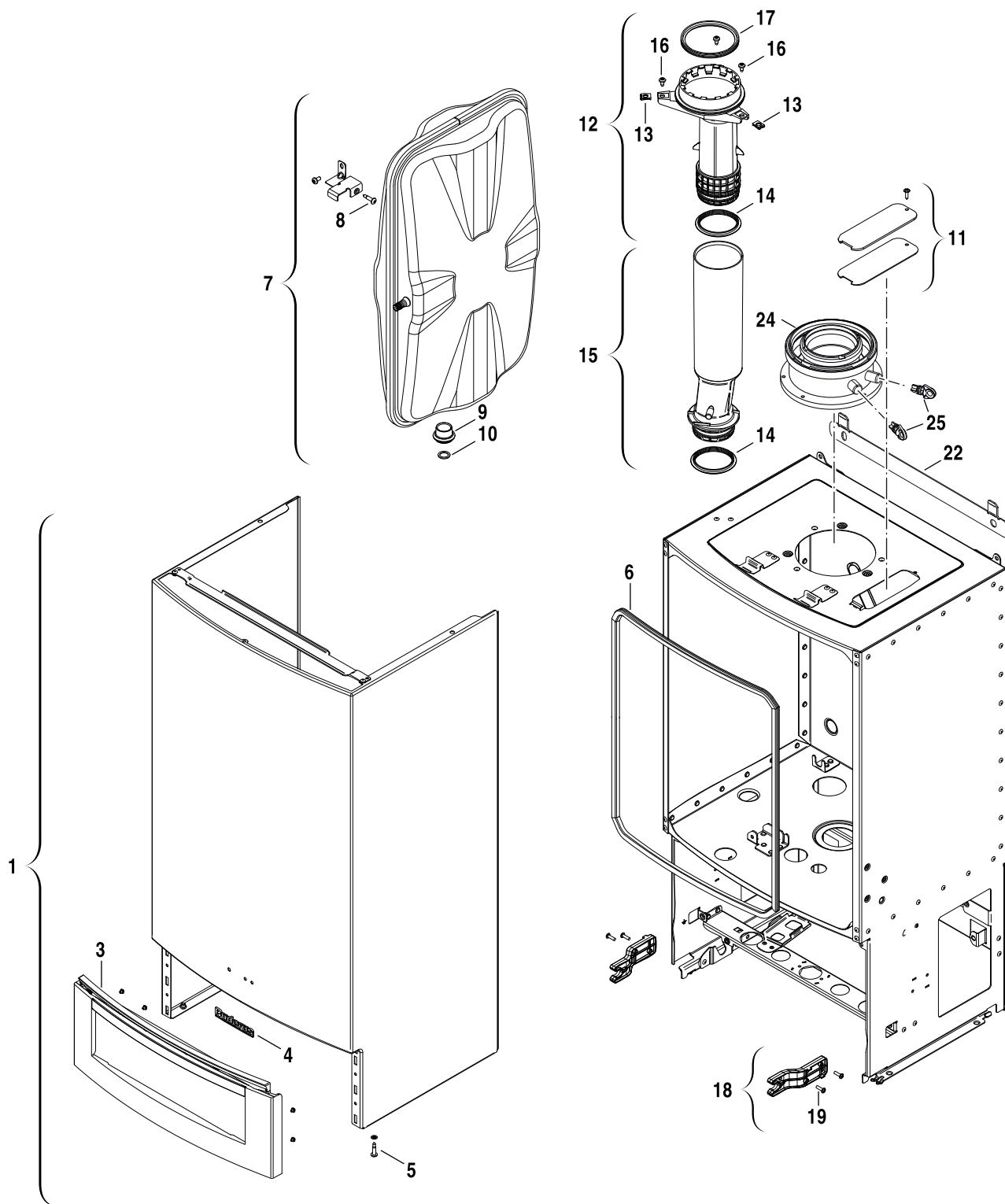
[az] Quraşdırılma

Quraşdırılma işinin yerinə yetirilməsi səlahiyyətli bir mütəxəssis tərəfindən və müvafiq qaydalara uyğun olaraq aparılmalıdır.

Spare parts list
Ersatzteilliste

Liste des pièces de rechange
Lista parti di ricambio

Onderdelenlijst
Yedek Parça Listesi



8738890822.aa.G

1
Sheet metal
Blechteile
Pièces de tôle
Parti di lamiera
Mantel
Sac Parcalari

GB072 14-24 (K)

Pos	Description Bezeichnung Dénomination Descrizioni Benaming Acıklamalar	Ordering no. Bestell-Nr. Numéro de commande N° d'ordine Bestelnummer Ordering no.	GB072-14	GB072-14 V2	GB072-20	GB072-20 V2	GB072-24	GB072-24 V2	GB072-24/24K	GB072-24K	GB072-24K V2											Remarks Bemerkungen Remarques Osservazioni Opmerkingen Notlar
1	Front shell trim low	8 718 642 408 0	■	■	■	■	■	■	■	■	■											Mantel 87186424080
1	Front shell trim low (HR-TOP)	8 737 600 236 0					■	■	■	■												
3	Frame trim low	8 718 642 587 0	■	■	■	■	■	■	■	■	■											Rahmen 87186425870
4	Trade mark badge Buderus	8 718 220 707 0	■	■	■	■	■	■	■	■	■											
5	Screw M5X22 (10x)	8 713 403 026 0	■	■	■	■	■	■	■	■	■											
6	Washer	8 716 013 857 0	■	■	■	■	■	■	■	■	■											
7	Expansion vessel	8 715 407 328 0	■	■	■	■	■	■	■	■	■											
8	Screw M5X12 (10x)	2 912 301 154 0	■	■	■	■	■	■	■	■	■											
9	Washer	8 710 103 209 0	■	■	■	■	■	■	■	■	■											
10	Gasket 18,6x13,5x1,5 (10x)	8 710 103 045 0	■	■	■	■	■	■	■	■	■											
11	cover plate	8 718 642 325 0	■	■	■	■	■	■	■	■	■											
12	Flue pipe top	8 716 106 939 0	■	■	■	■	■	■	■	■	■											
13	Nut 4,8mm (10x)	8 710 609 015 0	■	■	■	■	■	■	■	■	■											
14	Seal exhaust 59dia (2x)	8 737 711 102	■	■	■	■	■	■	■	■	■											
15	Pipe	8 716 012 266 0	■	■	■	■	■	■	■	■	■											
16	Screw 4,8x9,5 (10x)	2 910 614 431 0	■	■	■	■	■	■	■	■	■											
17	Lip seal DN80	8 711 004 232 0	■	■	■	■	■	■	■	■	■											
18	Support	8 718 641 211 0	■	■	■	■	■	■	■	■	■											
19	Screw 4x15 (10x)	2 914 211 304 0	■	■	■	■	■	■	■	■	■											
22	Covering sheet	8 737 600 298 0	■	■	■	■	■	■	■	■	■											
24	Adapter DN80/125	8 716 763 274 0	■	■	■	■	■	■	■	■	■											
25	Grommet	8 716 763 266 0	■	■	■	■	■	■	■	■	■											

GB072 14-24 (K)

Sheet metal
Blechteile
Pièces de tôle
Parti di lamiera
Mantel
Sac Parcalari

1

Pos	Description Bezeichnung Dénomination Descrizioni Benaming Acıklamalar	Ordering no. Bestell-Nr. Numéro de commande N° d'ordine Bestelnummer Ordering no.	GB072-14	GB072-14 V2	GB072-20	GB072-20 V2	GB072-24	GB072-24 V2	GB072-24/24K	GB072-24K	GB072-24K V2									Remarks Bemerkungen Remarques Osservazioni Opmerkingen Notlar	
1	Heating block	8 716 013 860 0			■		■		■	■											<=FD418
1	Heating block	8 716 013 861 0	■																		<=FD418
1	Heating block	8 737 601 090 0			■	■	■	■		■	■										>=FD419
1	Heating block	8 737 601 092 0	■	■																	>=FD419
2	Electrodes	8 718 107 087 0	■	■	■	■	■	■	■	■	■										<=FD920
2	Electrodes	8 737 602 770		■	■		■				■										>=FD953
3	Washer	8 711 004 325 0	■	■	■	■	■	■	■	■	■										
4	Burner	8 718 120 609 0			■	■	■	■	■	■	■										
4	Burner	8 718 120 616 0	■	■																	
5	Displacement body	8 715 405 196 0	■	■	■	■	■	■	■	■	■										
6	Lower baffle	8 715 405 205 0	■	■	■	■	■	■	■	■	■										
7	Set of mirrors	8 715 600 024 0	■	■	■	■	■	■	■	■	■										
8	High Limit Stat 120 dec	8 707 206 196 0	■	■	■	■	■	■	■	■	■										
9	Temperature limiter	8 710 506 267 0	■	■	■	■	■	■	■	■	■										
10	Lock Condensate receiver Buderus WB6	8 718 642 681 0	■	■	■	■	■	■	■	■	■										
11	Nut	8 713 301 196 0	■	■	■	■	■	■	■	■	■										
12	Temperature sensor NTC	8 714 500 087 0	■	■	■	■	■	■	■	■	■										
13	Inspection window	8 715 600 018 0	■	■	■	■	■	■	■	■	■										
14	Flanged Nut M8	8 713 301 180 0	■	■	■	■	■	■	■	■	■										
15	Condensate receiver	8 718 220 597 0	■				■		■	■											<=FD418
15	Condensate receiver	8 737 701 475 0	■	■	■	■	■	■	■	■	■										>=FD419
16	Seal	8 716 106 840 0	■	■	■	■	■	■	■	■	■										
17	Seal	8 711 004 324 0	■	■	■	■	■	■	■	■	■										
19	O-ring 17x4 (10x)	8 716 771 154 0	■	■	■	■	■	■	■	■	■										
	Service Kit WB6	8 737 712 516	■	■	■	■	■	■	■	■	■										

GB072 14-24 (K)

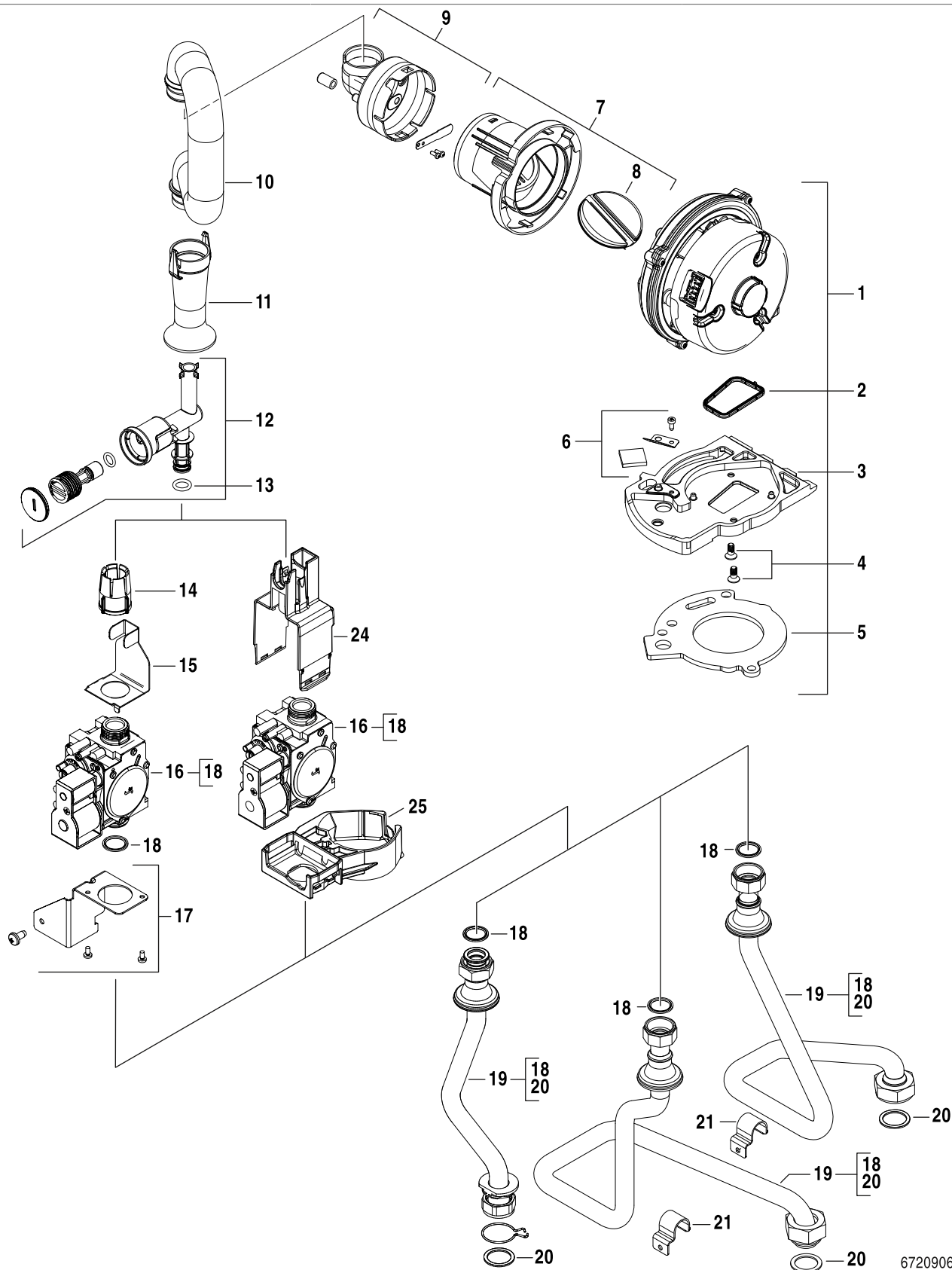
Heat exchanger
Wärmeübertrager
Caloporteur
Blocco lamellare
Warmtewisselaar
Esanjör

2

Spare parts list
Ersatzteilliste

Liste des pièces de rechange
Lista parti di ricambio

Onderdelenlijst
Yedek Parça Listesi



6720906676.ae.G

GB072 14-24 (K)

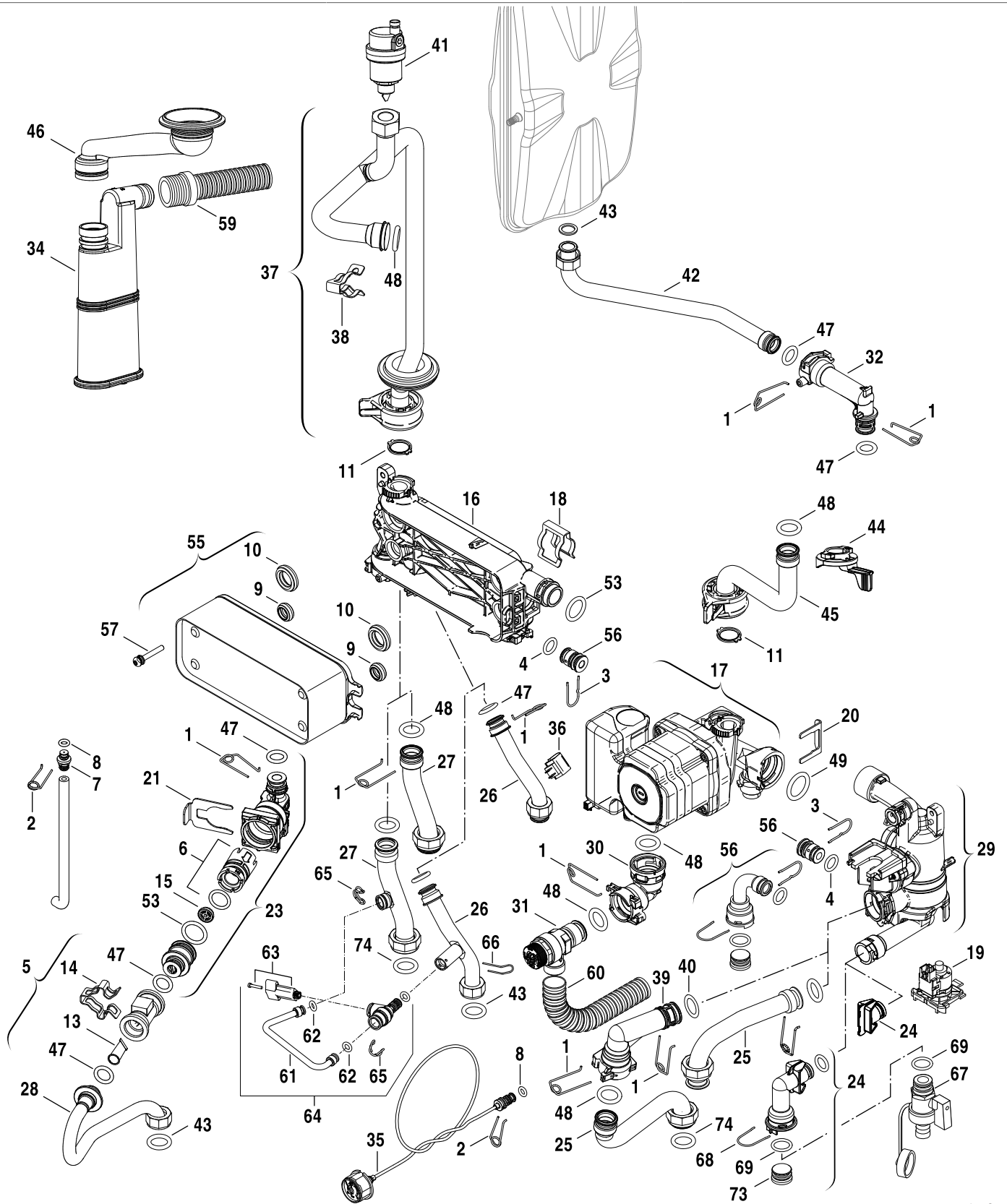
4

Gas valve
Gasarmatur
Bloc gaz
Gruppo gas
Gasregelblok
Gaz Armatürü

Spare parts list
Ersatzteilliste

Liste des pièces de rechange
Lista parti di ricambio

Onderdelenlijst
Yedek Parça Listesi



6720906677.af.RO

5A

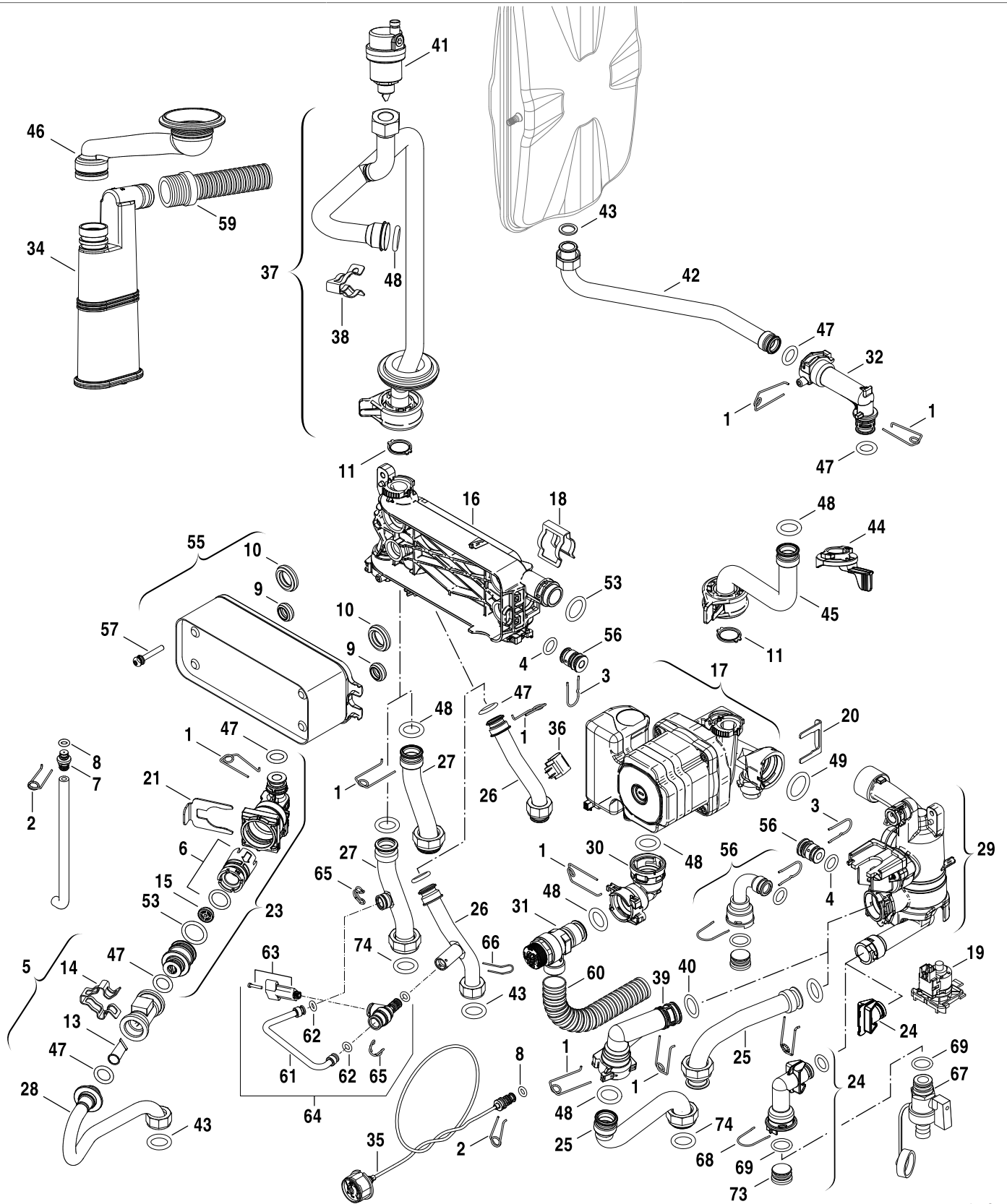
Hydraulic block
Hydraulikblock
Corps hydraulique
Blocco idraulico
Hydrauliekblok
Hidrolik Grubu

GB072 14-24 (K)

Spare parts list
Ersatzteilliste

Liste des pièces de rechange
Lista parti di ricambio

Onderdelenlijst
Yedek Parça Listesi



6720906677.af.RO

5A

Hydraulic block
Hydraulikblock
Corps hydraulique
Blocco idraulico
Hydrauliekblok
Hidrolik Grubu

GB072 14-24 (K)

Pos	Description Bezeichnung Dénomination Descrizioni Benaming Acıklamalar	Ordering no. Bestell-Nr. Numéro de commande N° d'ordine Bestelnummer Ordering no.	GB072-14	GB072-14 V2	GB072-20	GB072-20 V2	GB072-24	GB072-24 V2	GB072-24/24K	GB072-24K	GB072-24K V2									Remarks Bemerkungen Remarques Osservazioni Opmerkingen Notlar
45	Pipe	8 718 640 787 0							■	■	■									
46	Pipe siphon	8 716 011 510 0							■	■	■									
47	O-ring 13,87x3,53 L (10x)	8 716 107 439 0							■	■	■									
48	O-ring 17x4 (10x)	8 716 771 154 0							■	■	■									
49	O-ring 23x4 (10x)	8 716 771 353 0							■	■	■									
53	O-ring 20,22x3,53 EPDM (10x)	8 718 685 490 0							■	■	■									
55	Heat exchanger plate	8 718 640 231 0							■	■	■									
56	Plug (5x)	8 718 222 478 0							■	■	■									
57	Screw M5x35 (10x)	8 718 684 954 0							■	■	■									
59	Hose	8 716 012 070 0							■	■	■									
60	Hose	8 716 771 349 0							■	■	■									
61	Filling loop	8 718 642 577 0							■	■										
62	O-ring 6x2,5 (10x)	8 716 771 164 0							■	■										
63	Handle	8 719 905 518 0							■	■										
64	Filling loop	8 737 600 281 0							■	■										
65	Cable clip (10x)	8 719 905 335 0							■	■										
67	Fill and drain cock	7 101 556							■	■	■									
68	Wireform spring(10x)	8 716 103 487 0							■	■										
69	O-ring 15,54x2,62 (10x)	8 716 771 156 0							■	■										
70	Bracket	8 718 642 855 0							■	■										
71	Bracket	8 718 642 856 0							■	■										
72	T-adaptor	8 718 643 018 0							■	■										
73	Plug plastic	8 716 012 625 0							■	■										
74	Gasket 23,9x17,2x1,5 (10x)	8 710 103 043 0							■											
74	Filling loop	8 719 905 505 0							■	■										

GB072 14-24 (K)

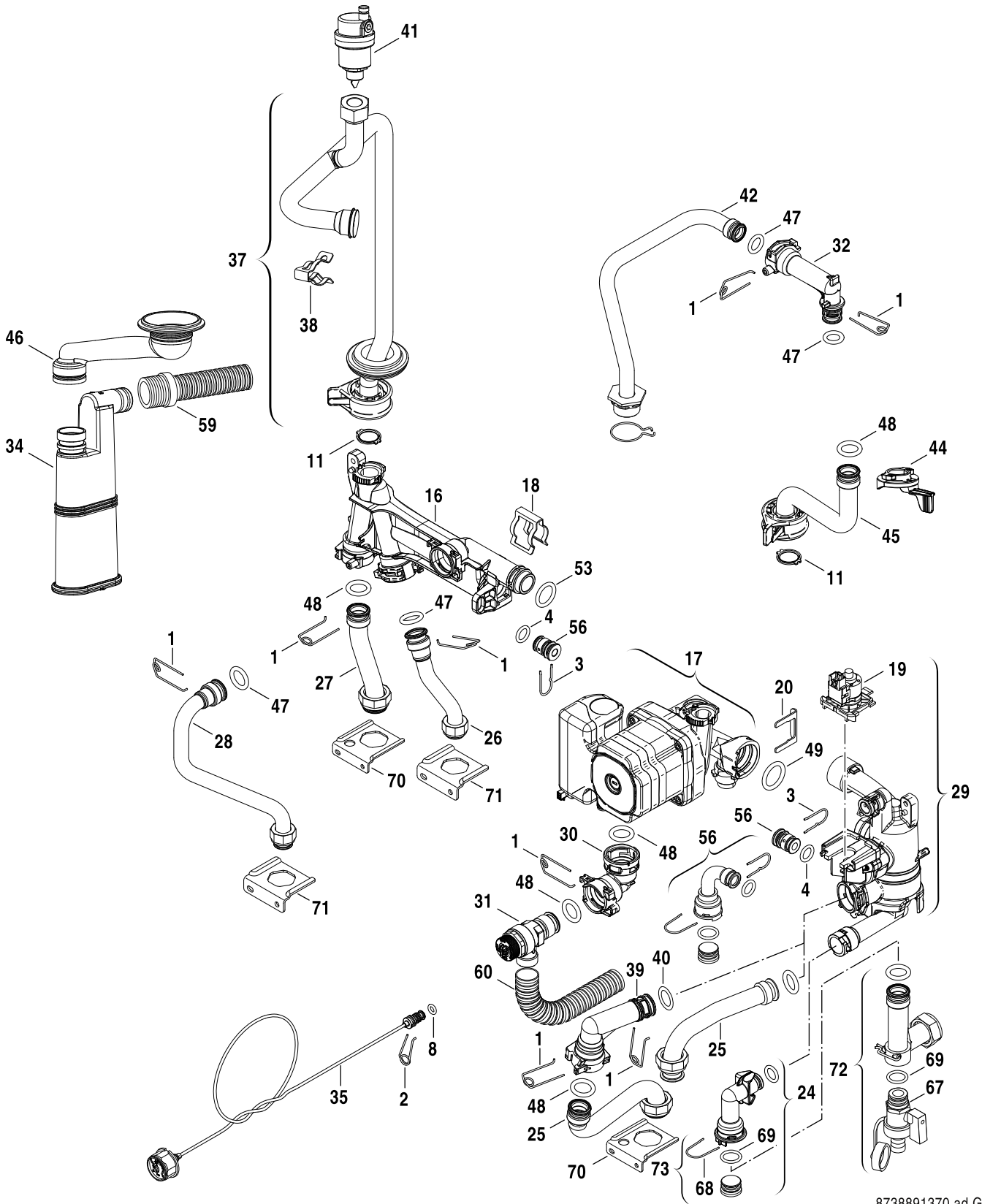
Hydraulic block
Hydraulikblock
Corps hydraulique
Blocco idraulico
Hydrauliekblok
Hidrolik Grubu

5A

Spare parts list
Ersatzteilliste

Liste des pièces de rechange
Lista parti di ricambio

Onderdelenlijst
Yedek Parça Listesi



8738891370.ad.G

5B

Hydraulic block
Hydraulikblock
Corps hydraulique
Blocco idraulico
Hydrauliekblok
Hidrolik Grubu

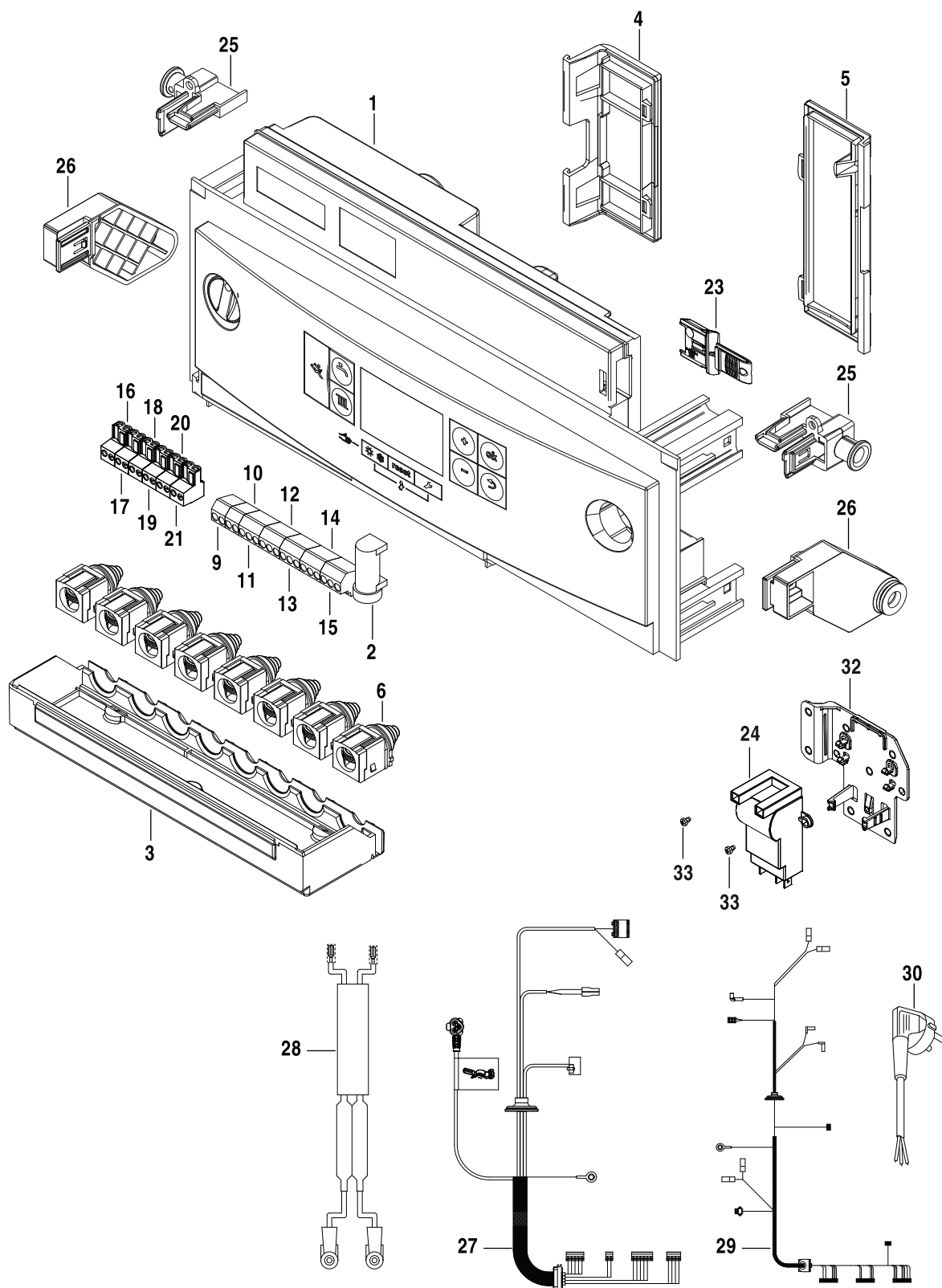
GB072 14-24 (K)

Pos	Description Bezeichnung Dénomination Descrizioni Benaming Acıklamalar	Ordering no. Bestell-Nr. Numéro de commande N° d'ordine Bestelnummer Ordering no.																																										Remarks Bemerkungen Remarques Osservazioni Opmerkingen Notlar
73	Plug plastic	8 716 012 625 0	■	■	■	■	■	■																																				
GB072 14-24 (K)		Hydraulic block Hydraulikblock Corps hydraulique Blocco idraulico Hydrauliekblok Hidrolik Grubu																				5B																						

Spare parts list
Ersatzteilliste

Liste des pièces de rechange
Lista parti di ricambio

Onderdelenlijst
Yedek Parça Listesi



8738890823.ad.G

6

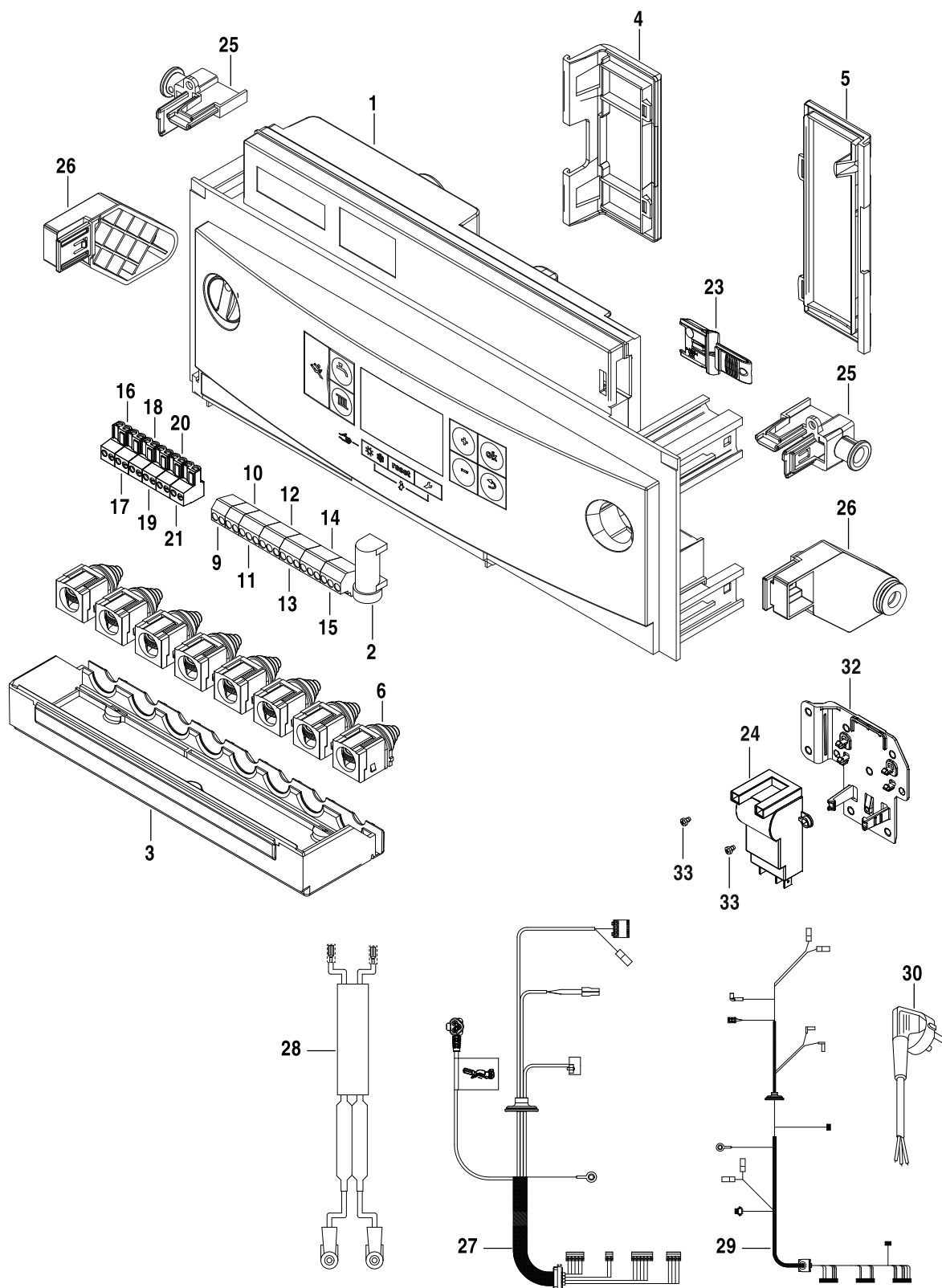
Control box
Schaltkasten
Tableau de commande
Quadro comandi
Schakelkast
Kumanda Ünitesi

GB072 14-24 (K)

Spare parts list
Ersatzteilliste

Liste des pièces de rechange
Lista parti di ricambio

Onderdelenlijst
Yedek Parça Listesi



8738890823.ad.G

6

Control box
Schaltkasten
Tableau de commande
Quadro comandi
Schakelkast
Kumanda Ünitesi

GB072 14-24 (K)

List of translations Übersetzungsliste		Liste des traductions Traduzione delle descrizioni		Vertalinglijst Ceviri Listesi	
Pos	Beschreibung	Denomination	Descrizione	Benaming	Acıklamalar
1	Baugruppe	Groupe de construction	Gruppo di costruzione	Montagegroep	Yapi elemanlari
1	Mantel trim low	Habillage	Mantello	Mantel	Gövde trim low
1	Mantel trim low (HR-TOP)	Habillage	Mantello	Mantel	Gövde trim low (HR-TOP)
3	Rahmen trim low	Cadre-support	Conice	Frame	Cerceve trim low
4	Logo Buderus	Marquage Buderus	Targhetta Buderus	Fabrieksmerk Buderus	Buderus Amblemi
5	Schraube M5X22 (10x)	Vis M5X22 (10x)	Vite M5X22 (10x)	Schroef M5 x 22 (10 x)	Civata M5X22 (10x)
6	Dichtung	Joint	Guarnizione	Afdichting	Conta
7	Ausdehnungsgefäß	Vase d'expansion GB072 14-24(k)/ GB172	Vaso di espansione	Expansievat	Genlesme Tank#
8	Schraube M5X12 (10x)	Vis M5X12 (10x)	Vite M5X12 (10x)	Schroef M5 x 12 (10 x)	C#vata M5X12 (10x)
9	Dichtung	Joint	Guarnizione	Afdichting	RONDELA
10	Dichtung 18,6x13,5x1,5 (10x)	Joint 18,6x13,5x1,5 (10x)	Guarnizione 18,6x13,5x1,5 (10x)	Pakking 18,6x13,5x1,5 (10x)	Conta 18,6x13,5x1,5 (10x)
11	Abdeckblech	Couvercle acces service	Lamiera di protezione	Afdekplaat	Koruma Sac#
12	Abgasrohr oben	Tuyau de fumées haut	Condotto per gas combusti sopra	Rookgasafvoerbus Boven	At#k gaz borusu üst
13	Mutter 4,8mm (10x)	Ecrou 4,8mm (10x)	Dado 4,8mm (10x)	Moer 4,8mm (10x)	Somun 4,8mm (10x)
14	Dichtring D59mm (2x)	Joint D59 (2x)	Guarnizione #59 (2x)	Afdichtring #59 (2x)	Conta #59 (2x)
15	Rohr	Tube	Tubo	Afvoerbus Condens (onder)	Boru
16	Schraube 4,8x9,5 (10x)	Vis 4,8x9,5 (10x)	Vite 4,8x9,5 (10x)	Schroef 4,8x9,5 (10x)	Vida 4,8x9,5 (10x)
17	Lippendichtung DN80	Joint DN80	Guarnizione DN80	Lipring DN80	Conta DN80
18	Halterung	Support	Supporto	Houder	Tutucu
19	Schraube 4x15 (10x)	Vis 4x15 (10x)	Vite 4x15 (10x)	Schroef 4x15 (10x)	Vida 4x15 (10x)
22	Befestigungsblech Aufhängung	Tôle de protection	Copertura	Bevestigingsplaat	Baglanti Saci
24	Adapter DN80/125	Adaptateur DN80/125	Adattore DN80/125	Adapter DN80/125	Adaptör DN80/125
25	Stopfen	Bouchon a/joint	Coperchietto	Doorvoertule	Tapa
2	Baugruppe	Groupe de construction	Gruppo di costruzione	Montagegroep	Yapi elemanlari
1	Wärmeblock	Echangeur thermique	Blocco lamellare	Warmtewisselaar	Esanjör
2	Elektrodensatz	Jeu d'électrodes	Set di elettrodi	Elektrodenset	Elektrod seti
3	Dichtung	Joint	Guarnizione	Afdichting	Conta
4	Brenner	Bruleur	Bruciatore	Brander	Brülör
5	Verdrängungskörper	DÉPLACEUR	Corpo di spostamento	Verplaatsingslichaam	Isi Yönlendirici
6	Körper unten	BASSE DÉFLECTEUR	Corpo di spostamento	Warmteverspreider onder	Is# Yönlendirici
7	Spiegelsatz	Sachet de miroirs	Set di specchio	Spiegelset	Cam Panel
8	Temperaturbegrenzer	Thermostat	Termostato limite 120° C	Regelthermostaat	S#cakl#k Regülatörü

List of translations Übersetzungsliste		Liste des traductions Traduzione delle descrizioni		Vertalinglijst Ceviri Listesi	
Pos	Beschreibung	Denomination	Descrizione	Benaming	Acıklamalar
9	Temperaturbegrenzer	Limiteur de température	Limitatore di temperatura	Temperatuurbegrenzer	S#cakl#k Limitörü
10	Verschluss Kondensatsammler Buderus WB6	Serrure Capacité de réserve WB6	Chiusura Colletore delle condense WB6	Eindlid condensopvangstuk	Kilit KONDENS SUYU KABI WB6
11	Mutter	Écrou	Dado	Moer	Somon
12	Temperaturfühler NTC	Sonde de température NTC	Sonda di temperaturua NTC	Temperatuursensor NTC	S#cakl#k Sensörü NTC
13	Schauglas	Hublot	Vetrino	Kijkglas	Cam Panel
14	Mutter M8	Ecrou M8	Dado M8	Moer M8	Somon M8
15	Kondensatsammler	Capacité de réserve	Colletore delle condense	Condensopvangstuk	Kondens Suyu toplayicisi
15	Kondensatsammler WB6	Capacité de réserve	Colletore delle condense	Condensopvangstuk	Kondens Suyu toplay#c#s#
16	Dichtgummi	Joint	Gomma di tenuta	Afdichtingsrubber	Conta
17	Dichtgummi	Joint	Gomma di tenuta	Afdichtingsrubber	Conta
19	O-Ring 17x4 (10x)	Joint torique 17x4 (10x)	O-ring 17x4 (10x)	O-ring 17x4 (10x)	O-Ring 17x4 (10x)
	Service Kit WB6	Service Kit WB6	Service Kit WB6	Service Kit WB6	Servis Kiti WB6
4	Baugruppe	Groupe de construction	Gruppo di costruzione	Montagegroep	Yapi elemanlari
1	Gebläse	Ventilateur	Ventilatore	Ventilator	Fan
2	Dichtung (Gebläse)	Joint (Ventilateur)	Guarnizione (Ventilatore)	Pakking (Ventilator)	Conta (Fan)
3	Anschlussplatte	Plaque de raccordement	Piastra di collegamento	Aansluitplaat	Baglanti Plakasi
4	Schraube 60x14 (2x)	Vis 60x14 (2x)	Vite 60x14 (2x)	Schroef 60 x 14 (2 x)	Civata 60x14 (2x)
5	Dichtung	Joint	Guarnizione	Afdichting	Conta
6	Spiegelsatz	Sachet de miroirs	Set di specchio	Spiegelset	Cam Panel
7	Gehäuse	Carter	Involucro	Bescherm	Gövde
8	Rückströmsicherung	Clapet anti-retour	Valvola di non ritorno	Terugslagklep	Gerü Ak#° Önleme Sistemi
9	Luftbegrenzer	Limiteur d'air	Camera d'aria	LUCHTBEGRENZER TOP 14/400-3 SOLAR ZSB	Hava Sinirleyici
10	Ansaugrohr	Tuyauterie	Tubo di raccordo	Aansluit pijp	Baglanti Borusu
11	Drosselbuchse	Coussinet limiteur	Buccola di strozzaggio	Regelventiel	Kisma Burcu
12	Gasrohr	Tube gaz	Tubo gas	Gaspijp	Gaz Borusu
13	O-Ring 12x3 (10x)	Joint torique 12x3 (10x)	O-ring 12x3 (10x)	O-ring 12x3 (10x)	O-Ring 12x3 (10x)
14	Überwurfmutter	Ecrou	Dado	Wartelmoer	CIVATA
15	Winkel	Equerre	Staffa	Hoeksteun	Tespit Saci
16	Gasarmatur	Bloc gaz	Gruppo gas	Gasregelblok	GAZ ARMATÜRÜ
17	Winkel	Equerre	Staffa	Hoeksteun	Tespit Saci
18	Dichtung 18,3x24,3 (10x)	Joints 18,3x24,3 (10x)	Guarnizione 18,3x24,3 (10x)	Afdichting 18,3 x 24,3 (10 x)	RONDELA 18,3x24,3 (10x)
19	Gasrohr vertikal	Tube gaz vertical	Tubo gas verticale	Gaspijp verticaal	Gaz Borusu dikey

List of translations Übersetzungsliste		Liste des traductions Traduzione delle descrizioni		Vertalinglijst Ceviri Listesi	
Pos	Beschreibung	Denomination	Descrizione	Benaming	Acıklamalar
19	Gasrohr horizontal	Tube gaz horizontal	Tube gas orizzontale	Gaspijp horizontaal	Gaz Borusu yatay
20	Dichtung 30x25x1,5 (10x)	Joint 30x25x1,5 (10x)	Guarnizione 30x25x1,5 (10x)	Pakking 30x25x1,5 (10x)	Conta 30x25x1,5 (10x)
21	Halter	Support	Supporto	steun	Tutucu
23	Halterung	Support	Supporto	Beugel	Tespit Sac#
24	Gehäuse	Carter	Involucro	behuizing, omkasting	Gövde
25	Träger	Plaque de jonction	Supporto	Draaier	Ta#y#c#
5A	Baugruppe	Groupe de construction	Gruppo di costruzione	Montagegroep	Yapi elemanlari
1	Haltefeder 18mm (10x)	Epingle 18mm (10x)	Molletta di ritenzione 18mm (10x)	Borgveer 18mm (10x)	Segman 18mm (10x)
2	Haltefeder 10mm (10x)	Epingle 10mm (10x)	Molletta di ritenzione 10mm (10x)	Borgveer 10mm (10x)	Segman 10mm (10x)
3	Haltefeder 13mm	Epingle 13mm	Molletta di ritenzione 13mm	Borgveer 13 mm	Segman 13mm
4	O-Ring 12,5x3 WRAS / KTW (1x)	Joint torique 12,5 x3 wras / ktw (1x)	Anello tenuta 12,5x3 WRAS / KTW (1x)	O-ring 12,5x3 WRAS / KTW (1 x)	O-Ring 12,5x3 WRAS / KTW (1x)
5	Turbine	Turbine	Turbina	Turbine	Türbin
6	Schalldämpfer	Silencieux	Carcassa	Geruisdemper	SUSTURUCU
7	Sicherheitsventil	Soupape de surpression	Valvola sicurezza	Veiligheidsklep	Ventil
8	O-Ring 2,62x6,02 WRAS / KTW (10x)	Joint torique 2,62x6,02 WRAS / KTW (10x)	O-ring 2,62x6,02 WRAS / KTW (10x)	O-ring 2,62 x 6,02 WRAS / KTW (10x)	O-Ring 2,62x6,02 WRAS / KTW (10x)
9	Dichtung 19,4x8 (10x)	Joint 19,4x8 (10x)	Guarnizione 19,4x8 (10x)	Pakking 19,4x8 (10x)	Conta 19,4x8 (10x)
10	Dichtung 28,4x8 (10x)	Joint 28,4x8 (x10)	Guarnizione 28,4x8 (10x)	Pakking 28,4x8 (10x)	Conta 28,4x8 (10x)
11	Dichtung 18,5x24,3 (10x)	Joint 18,5x24,3 (10x)	Guarnizione 18,5x24,3 (10x)	Pakking 18,5 x 24,3 (10 x)	Conta 18,5x24,3 (10x)
12	Schraube M5 rostfrei	Vis M5 Stainless	Vite M5 Stainless	Schroef M5 Stainless	Civata M5 Stainless
13	Filter KW	Filtre	Filtro	Filter	Su Filtresi
14	Klammer (10x)	Clip (10x)	Graffa (10x)	Klem (10 x)	KLIPS (10x)
15	Durchflussbegrenzer 12 l/min	Limiteur de débit 12 l/min	Flow regulator type E-W 12 l/min red	Doorstroombegrenzer 12 l/min rood	Regülatör 12 l/min
16	Sammler	Collecteur	Colletore	Opvangstuk	Manifold plate
17	Pumpe 3PK/43	POMPE 3PK/43	Pompa 3PK/43	Pomp 3PK/43	Pompa 3PK/43
17	Pumpe UPMO 15-60 HU1 9H	Pompe UPMO 15-60 HU1 9H	Pompa UPMO 15-60 HU1 9H	Pomp UPMO 15-60 HU1 9H	Pompa UPMO 15-60 HU1 9H
18	Klammer (10x)	Clip tube (10x)	Clip a innesto a U (10x)	Klem (10x)	Segman (10x)
19	Stellmotor	Servomoteur	Servo motore	Motor	Motor
20	Sicherungsklammer (10x)	Clip (10x)	Clip di ritenzione (10x)	Clip (10x)	Segman (10x)
21	Sicherungsklammer (10x)	Clip (10x)	Graffa (10x)	Clip (10 x)	Segman (10x)
23	Anschlussgruppe Solar HU1	Kit de raccordement Solar HU1	Gruppo di collegamento Solar HU1	Aansluitgroep Solar HU1	Ba#lant# Grubu Solar HU1
24	Bogen	Coude	Curva	Bocht	Dirsek
25	Rücklaufrohr	Tube retour	Tubo di ritorno	Retourleiding	Geri Dönü° Borusu

List of translations Übersetzungsliste		Liste des traductions Traduzione delle descrizioni		Vertalinglijst Ceviri Listesi	
Pos	Beschreibung	Denomination	Descrizione	Benaming	Acıklamalar
26	Rohr WW	Tube	Tubo	Pijp	Boru
26	Rohr	Tube	Tubo	Pijp	Boru
26	Rohr DHW assy. vertical	Tube	Tubo	Pijp	Boru DHW assy. vertical
27	Rohr HV unten	Tube	Tubo	Pijp	Boru
27	Rohr	Tube	Tubo	Pijp	Boru
27	Rohr CH flow vertical	Tube	Tubo	Pijp	Boru CH flow vertical
28	Rohr KW	Tube	Tubo	Pijp	Boru
28	Rohr	Tube	Tubo	Pijp	Boru
29	Rücklaufeinheit	Dispositif de retour	Unit# di ritorno	Retourinrichting	Giris tertibati
30	Anschlussstück Sicherheitsventil	Raccord soupape de sécurité	Raccordo valvola di sicurezza	Aansluitstuk veiligheidsklep	Ba#lant# Parças# Emniyet Ventili
31	Sicherheitsventil	Soupape de sécurité	Valvola di sicurezza	Overstortventiel	Emniyet Ventili
32	Anschlussstück Ausdehnungsgefäß	Raccord	Raccordo di collegamento	Aansluitstuk	Baglanti Parçasi
34	Siphon	Siphon	Sifone	Sifon	Sifon
35	Manometer	Manom#tre	Manometro	Manometer	Manometre
36	Temperaturfühler NTC	Sonde de température NTC	Sonda di temperatua NTC	Temperatuursensor NTC	Sicaklik Sensörü NTC
37	Rohr HV oben	Tube	Tubo	Pijp	Boru
38	Klammer (10x)	Clip tube (x10)	Clip a innesto a U (10x)	Klem (10x)	Segman (10x)
39	Rücklaufbogen	Retour coude	Ritorno curva	Retourbocht	Dönü° hatt# dirsek
40	O-Ring 18,7x2,7 (10x)	Joint torique 18,7x2,7 (10x)	O-ring 18,7x2,7 (10x)	O-ring 18,7x2,7 (10x)	O-Ring 18,7x2,7 (10x)
41	Entlüfter	Purgeur	Disaeratore	Ontluchter	Pürjör
42	Rohr Ausdehnungsgefäß	Tube	Tubo Vaso di espansione	Pijp	Boru
43	Dichtung 18,6x13,5x1,5 (10x)	Joint 18,6x13,5x1,5 (10x)	Guarnizione 18,6x13,5x1,5 (10x)	Pakking 18,6x13,5x1,5 (10x)	Conta 18,6x13,5x1,5 (10x)
44	Klemmband	Collier de serrage	Nastro di serraggio	Bajonet pomp-warmtewiss. Top 22/28-3C	K#skaçband#
45	Rücklaufrohr	Tube	Tubo	Pijp	Boru
46	Rohr Siphon	TUBE GB072 14-24(K)	Tubo sifone	Pijp	BORU
47	O-Ring 13,87x3,53 L (10x)	Joint torique 13,87x3,53 L (10x)	O-ring 13,87x3,53 L (10x)	O-ring 13,87x3,53 L (10x)	O-Ring 13,87x3,53 L (10x)
48	O-Ring 17x4 (10x)	Joint torique 17x4 (10x)	O-ring 17x4 (10x)	O-ring 17x4 (10x)	O-Ring 17x4 (10x)
49	O-Ring 23x4 (10x)	Joint torique 23x4 (10x)	O-ring 23x4 (10x)	O-ring 23x4 (10x)	O-Ring 23x4 (10x)
53	O-Ring 20,22x3,53 EPDM (10x)	Joint torique 20,22x3,53 EPDM (10x)	O-ring 20,22x3,53 EPDM (10x)	O-ring 20,22x3,53 EPDM (10x)	O-Ring 20,22x3,53 EPDM (10x)
55	Plattenwärmetauscher	Echangeur de chaleur	Scambiatore di calore	Warmtewisselaar	Esanjör plakali
56	Stopfen (5x)	Bouchon (5x)	Tappo (5x)	Stop (5 x)	Tapa (5x)
57	Schraube M5x35 (10x)	Vis M5x35 (10x)	Vite M5x35 (10x)	Schroef M5x35 (10x)	Civata M5x35 (10x)

List of translations Übersetzungsliste		Liste des traductions Traduzione delle descrizioni		Vertalinglijst Ceviri Listesi	
Pos	Beschreibung	Denomination	Descrizione	Benaming	Acıklamalar
59	Schlauch	Tuyau	Tube flessibile	Flexibel Afvoer Sifon	Hortum
60	Schlauch	Tuyau	Tube flessibile	Slang	HORTUM
61	Fülleinrichtung	Dispositif de remplissage	Set carico impianto	Vulinrichtung	Doldurma Donanimi
62	O-Ring 6x2,5 (10x)	Joint torique 6x2,5 (x10)	Anello tenuta 6x2,5 (10x)	O-ring 6x2,5 (10x)	O-ring 6x2,5 (10x)
63	Griff	Manette	Manopola	Knop	U052/24-28K DOLDURMA VANASI BORUSU
64	Fülleinrichtung	Dispositif de remplissage	Set carico impianto	Vulinrichtung	Doldurma Muslugu
65	Kabelclip (10x)	Sert-câble (10x)	Clip di fissaggio cavo (10x)	Kabelclip (10x)	Kablo Kliibi (10x)
67	Füll- und Entleerungshahn schwarz	robinet de remplissage et de vidange	rubinetto di carico e scarico	Vul- en aftapkraan	Doldurma Bo°altma Muslu#u
68	Haltefeder (10x)	Epingle (10x)	Molla (10x)	Borgveer (10x)	SEGMAN
69	O-Ring 15,54x2,62 (10x)	Joint torique 15,54x2,62 (10x)	O-ring 15,54x2,62 (10x)	O-ring 15,54x2,62 (10x)	O-Ring 15,54x2,62 (10x)
70	Halterung	Support	Supporto	Beugel	Tespit Sac#
71	Halter	Support	Supporto	steun	Tutucu
72	Übergangs-T-Stück	Pi#ce de réduction en T	Raccordo a T a stringere	Overgangs-T-stuk	T Parça
73	Stopfen plastik	PRISE DE COURANT PLASTIQUE	Plug plastic	Plug plastic	Tapa plastik
74	Dichtung 23,9x17,2x1,5 (10x)	Joint 23,9x17,2x1,5 (10x)	Guarnizione 23,9x17,2x1,5 (10x)	Pakking 23,9x17,2x1,5 (10x)	Conta 23,9x17,2x1,5 (10x)
74	Fülleinrichtung	Dispositif remplissage	Set carico impianto	Vulinrichtung	Doldurma Muslugu
5B	Baugruppe	Groupe de construction	Gruppo di costruzione	Montagegroep	Yapi elemanlari
1	Haltefeder 18mm (10x)	Epingle 18mm (10x)	Molletta di ritenzione 18mm (10x)	Borgveer 18mm (10x)	Segman 18mm (10x)
2	Haltefeder 10mm (10x)	Epingle 10mm (10x)	Molletta di ritenzione 10mm (10x)	Borgveer 10mm (10x)	Segman 10mm (10x)
3	Haltefeder 13mm	Epingle 13mm	Molletta di ritenzione 13mm	Borgveer 13 mm	Segman 13mm
4	O-Ring 12,5x3 WRAS / KTW (1x)	Joint torique 12,5 x3 wras / ktw (1x)	Anello tenuta 12,5x3 WRAS / KTW (1x)	O-ring 12,5x3 WRAS / KTW (1 x)	O-Ring 12,5x3 WRAS / KTW (1x)
11	Dichtung 18,5x24,3 (10x)	Joint 18,5x24,3 (10x)	Guarnizione 18,5x24,3 (10x)	Pakking 18,5 x 24,3 (10 x)	Conta 18,5x24,3 (10x)
12	Schraube M5 rostfrei	Vis M5 Stainless	Vite M5 Stainless	Schroef M5 Stainless	Civata M5 Stainless
16	Sammler	Collecteur syst#me	Collettore	Opvangstuk	Toplayici
17	Pumpe 3PK/43	POMPE 3PK/43	Pompa 3PK/43	Pomp 3PK/43	Pompa 3PK/43
17	Pumpe UPMO 15-60 HU1 9H	Pompe UPMO 15-60 HU1 9H	Pompa UPMO 15-60 HU1 9H	Pomp UPMO 15-60 HU1 9H	Pompa UPMO 15-60 HU1 9H
18	Klammer (10x)	Clip tube (10x)	Clip a innesto a U (10x)	Klem (10x)	Segman (10x)
19	Stellmotor	Servomoteur	Servo motore	Motor	Motor
20	Sicherungsklammer (10x)	Clip (10x)	Clip di ritenzione (10x)	Clip (10x)	Segman (10x)
21	Sicherungsklammer (10x)	Clip (10x)	Graffa (10x)	Clip (10 x)	Segman (10x)
24	Bogen	Coude	Curva	Bocht	Dirsek
25	Rücklaufrohr	Tube retour	Tube di ritorno	Retourleiding	Geri Dönü° Borusu

List of translations Übersetzungsliste		Liste des traductions Traduzione delle descrizioni		Vertalinglijst Ceviri Listesi	
Pos	Beschreibung	Denomination	Descrizione	Benaming	Acıklamalar
26	Rohr VL Speicher	Tube	Tubo	Pijp	Boru
26	Rohr	Tube	Tubo	Pijp	Boru
27	Rohr HV unten	Tube	Tubo	Pijp	Boru
27	Vorlaufrohr	Tube départ	Tubo di mandata	Aanvoerleiding	Gidl° Suyu Borusu
28	Rücklaufrohr Speicher	Tube	Tubo	Pijp	Boru
28	Rohr	Tube	Tubo	Pijp	Boru
29	Rücklaufeinheit	Dispositif de retour	Unit# di ritorno	Retourinrichting	Giris tertibati
30	Anschlussstück Sicherheitsventil	Raccord soupape de sécurité	Raccordo valvola di sicurezza	Aansluitstuk veiligheidsklep	Ba#lant# Parças# Emniyet Ventili
31	Sicherheitsventil	Soupape de sécurité	Valvola di sicurezza	Overstortventiel	Emniyet Ventili
32	Anschlussstück Ausdehnungsgefäß	Raccord	Raccordo di collegamento	Aansluitstuk	Baglanti Parçasi
34	Siphon	Siphon	Sifone	Sifon	Sifon
35	Manometer	Manom#tre	Manometro	Manometer	Manometre
36	Temperaturfühler NTC	Sonde de température NTC	Sonda di temperatura NTC	Temperatuursensor NTC	Sicaklik Sensörü NTC
37	Rohr HV oben	Tube	Tubo	Pijp	Boru
38	Klammer (10x)	Clip tube (x10)	Clip a innesto a U (10x)	Klem (10x)	Segman (10x)
39	Rücklaufbogen	Retour coude	Ritorno curva	Retourbocht	Dönü° hatt# dirsek
40	O-Ring 18,7x2,7 (10x)	Joint torique 18,7x2,7 (10x)	O-ring 18,7x2,7 (10x)	O-ring 18,7x2,7 (10x)	O-Ring 18,7x2,7 (10x)
41	Entlüfter	Purgeur	Disaeratore	Ontluchter	Pürjör
42	Rohr Ausdehnungsgefäß	Tube	Tubo Vaso di espansione	Pijp	Boru
43	Dichtung 18,6x13,5x1,5 (10x)	Joint 18,6x13,5x1,5 (10x)	Guarnizione 18,6x13,5x1,5 (10x)	Pakking 18,6x13,5x1,5 (10x)	Conta 18,6x13,5x1,5 (10x)
44	Klemmband	Collier de serrage	Nastro di serraggio	Bajonet pomp-warmtewiss. Top 22/28-3C	K#skaçband#
45	Rücklaufrohr	Tube	Tubo	Pijp	Boru
46	Rohr Siphon	TUBE GB072 14-24(K)	Tubo sifone	Pijp	BORU
47	O-Ring 13,87x3,53 L (10x)	Joint torique 13,87x3,53 L (10x)	O-ring 13,87x3,53 L (10x)	O-ring 13,87x3,53 L (10x)	O-Ring 13,87x3,53 L (10x)
48	O-Ring 17x4 (10x)	Joint torique 17x4 (10x)	O-ring 17x4 (10x)	O-ring 17x4 (10x)	O-Ring 17x4 (10x)
49	O-Ring 23x4 (10x)	Joint torique 23x4 (10x)	O-ring 23x4 (10x)	O-ring 23x4 (10x)	O-Ring 23x4 (10x)
53	O-Ring 20,22x3,53 EPDM (10x)	Joint torique 20,22x3,53 EPDM (10x)	O-ring 20,22x3,53 EPDM (10x)	O-ring 20,22x3,53 EPDM (10x)	O-Ring 20,22x3,53 EPDM (10x)
56	Stopfen (5x)	Bouchon (5x)	Tappo (5x)	Stop (5 x)	Tapa (5x)
59	Schlauch	Tuyau	Tubo flessibile	Flexibel Afvoer Sifon	Hortum
60	Schlauch	Tuyau	Tubo flessibile	Slang	HORTUM
67	Füll- und Entleerungshahn schwarz	robinet de remplissage et de vidange	rubinetto di carico e scarico	Vul- en aftapkraan	Doldurma Bo°altma Muslu#u
68	Haltefeder (10x)	Epingle (10x)	Molla (10x)	Borgveer (10x)	SEGMAN

List of translations Übersetzungsliste		Liste des traductions Traduzione delle descrizioni		Vertalinglijst Ceviri Listesi	
Pos	Beschreibung	Denomination	Descrizione	Benaming	Açıklamalar
69	O-Ring 15,54x2,62 (10x)	Joint torique 15,54x2,62 (10x)	O-ring 15,54x2,62 (10x)	O-ring 15,54x2,62 (10x)	O-Ring 15,54x2,62 (10x)
70	Halterung	Support	Supporto	Beugel	Tespit Sac#
71	Halter	Support	Supporto	steun	Tutucu
72	Übergangs-T-Stück	Pi#ce de réduction en T	Raccordo a T a stringere	Overgangs-T-stuk	T Parça
73	Stopfen plastik	PRISE DE COURANT PLASTIQUE	Plug plastic	Plug plastic	Tapa plastik
6	Baugruppe	Groupe de construction	Gruppo di costruzione	Montagegroep	Yapi elemanlari
1	Keine Ersatzteile verfügbar	Aucune pi#ce détachée disponible	Non disponibili parti di ricambio	Geen onderdeel beschikbaar	Bu mamul için Yedek parça mevcut degildi
1	Steuergerät CUS Trim Low G-Low BC20	Tableau électrique CUS Trim Low G-Low BC	Casella di controllo CUS Trim Low G-Low	Bedieningsdoos CUS Trim Low G-Low BC20	Kontrol ünitesi CUS Trim Low G-Low BC20
2	Sicherung 5x20 F 5A (50x)	Fusible 5x20 F 5A (50x)	Fusibile 5x20 F 5A (50x)	Zekering 5x20 F 5A (50x)	Sigorta 5x20 F 5A (50x)
3	Abdeckung	COUVERTURE	Copertura	Dekking	Kapak
4	Abdeckung	COUVERTURE	Copertura	Dekking	Kapak
5	Abdeckung	COUVERTURE	Copertura	Dekking	Kapak
6	Zugentlastung	Serre-câble	Ferma cavo	Trekontlasting	Kablo Gerilme Emniyeti
7	Kabel	Kabel	Cavo	Kabel	Kablo
8	Kabel	Kabel	Cavo	Kabel	Kablo
9	Anschlussklemme 2-pol FR/FS blau	Borne de connexion 2-pol FR/FS bleu	Morsetto di collegamento 2-pol FR/FS blu	Afsluitklem 2-pol FR/FS blauw	Ba#lant# Klemensi 2-pol FR/FS mavi
10	Anschlussklemme 2-pol HW/CH gelb	Borne de connexion 2-pol HW/CH jaune	Morsetto collegamento 2-pol HW/CH giallo	Afsluitklem 2-pol HW/CH geel	Ba#lant# Klemensi 2-pol HW/CH sari
11	Anschlussklemme 3-pol N/L orange (5x)	Borne de connexion 3-pol N/L orange	Morsetto di collegamento 3-pol arancione	Afsluitklem 3-pol N/L oranje	Ba#lant# Klemensi 3-pol N/L turuncu
12	Anschlussklemme 3-pol N/L grau (5x)	Borne de connexion 3-pol N/L gris	Morsetto di collegamento 3-pol N/Lgrigio	Afsluitklem 3-pol N/L grijs	Ba#lant# Klemensi 3-pol N/L gri
13	Anschlussklemme 3-pol N/L violett (5x)	Borne de connexion 3-pol N/L violet	Morsetto collegamento 3-pol N/L violetto	Afsluitklem 3-pol N/L violet	Ba#lant# Klemensi 3-pol N/L eflatun
14	Anschlussklemme 3-pol N/L grün (5x)	Borne de connexion 3-pol N/L vert	Morsetto di collegamento 3-pol N/L verde	Afsluitklem 3-pol N/L groen	Ba#lant# Klemensi 3-pol N/L yesil
15	Anschlussklemme 3-pol N/L weiß (5x)	Borne de connexion 3-pol N/L blanc	Morsetto di collegamento 3-pol N/ bianco	Afsluitklem 3-pol N/L wit	Ba#lant# Klemensi 3-pol N/L beyaz
16	Anschlussklemme 2-pol grün (5x)	Borne de connexion 2-pol vert (5x)	Morsetto di collegamento 2-pol verde(5x)	Afsluitklem 2-pol groen (5x)	Ba#lant# Klemensi 2-pol yesil (5x)
17	Anschlussklemme 2-pol orange (5x)	Borne de connexion 2-pol orange (5x)	Morsetto di collegamento 2-pol arancione	Afsluitklem 2-pol oranje (5x)	Ba#lant# Klemensi 2-pol turuncu (5x)
18	Anschlussklemme 2-pol rot (5x)	Borne de connexion 2-pol rouge (5x)	Morsetto di collegamento 2-pol rosso	Afsluitklem 2-pol rood (5x)	Ba#lant# Klemensi 2-pol kirmizi (5x)
19	Anschlussklemme 2-pol blau (5x)	Borne de connexion 2-pol bleu (5x)	Morsetto di collegamento 2-pol blu (5x)	Afsluitklem 2-pol blauw (5x)	Ba#lant# Klemensi 2-pol mavi (5x)
20	Anschlussklemme 2-pol grau (5x)	Borne de connexion 2-pol gris (5x)	Morsetto di collegamento 2-pol grigio	Afsluitklem 2-pol grijs (5x)	Ba#lant# Klemensi 2-pol gri (5x)
21	Anschlussklemme 2-pol braun (5x)	Borne de connexion 2-pol brun (5x)	Morsetto di collegamento 2-pol bruno(5x)	Afsluitklem 2-pol bruin (5x)	Ba#lant# Klemensi 2-pol kahverengi (5x)
23	Kodierstecker KIM-06 1121 (NG)	Clé de codage KIM-06 1121 (NG)	Chiave di codifica KIM-06 1121 (NG)	Codeerstekker KIM-06 1121 (NG)	Kod Anahtar# KIM-06 1121 (NG)
23	Kodierstecker KIM-07 1122 (NG)	Clé de codage KIM-07 1122 (NG)	Chiave di codifica KIM-07 1122 (NG)	Codeerstekker KIM-07 1122 (NG)	Kod Anahtar# KIM-07 1122 (NG)
23	Kodierstecker KIM-51 1126 (LPG)	Code plug KIM-51 1126 (LPG)	Chiave di codifica KIM-51 1126 (LPG)	Codeerstekker KIM-51 1126 (LPG)	Kod Anahtar# KIM-51 1126 (LPG)
23	Kodierstecker KIM-52 1127 (LPG)	CLE DE CODAGE PROPANE GB072 24k	Chiave di codifica KIM-52 1127 (LPG)	Codeerstekker KIM-52 1127 (LPG)	Kod Anahtar# KIM-52 1127 (LPG)

List of translations Übersetzungsliste		Liste des traductions Traduzione delle descrizioni		Vertalinglijst Ceviri Listesi	
Pos	Beschreibung	Denomination	Descrizione	Benaming	Acıklamalar
23	Kodierstecker KIM-53 1168 (NG)	Clé de codage KIM-53 1168 (NG)	Chiave di codifica KIM-53 1168 (NG)	Codeerstekker KIM-53 1168 (NG)	Kod Anahtar# KIM-53 1168 (NG)
23	Kodierstecker KIM-54 1169 (NG)	Clé de codage KIM-54 1169 (NG)	Chiave di codifica KIM-54 1169 (NG)	Codeerstekker KIM-54 1169 (NG)	Kod Anahtar# KIM-54 1169 (NG)
23	Kodierstecker KIM-22 1171 (LPG)	Clé de codage KIM-22 1171 (LPG)	Chiave di codifica KIM-22 1171 (LPG)	Codeerstekker KIM-22 1171 (LPG)	Kod Anahtar# KIM-22 1171 (LPG)
23	Kodierstecker KIM-23 1172 (LPG)	Clé de codage KIM-23 1172 (LPG)	Chiave di codifica KIM-23 1172 (LPG)	Codeerstekker KIM-23 1172 (LPG)	Kod Anahtar# KIM-23 1172 (LPG)
23	Kodierstecker KIM-06 1121 (NG)	Clé de codage KIM-06 1121 (NG)	Chiave di codifica KIM-06 1121 (NG)	Codeerstekker KIM-06 1121 (NG)	Kod Anahtar# KIM-06 1121 (NG)
23	Kodierstecker KIM-52 1127 (LPG)	CLE DE CODAGE PROPANE GB072 24k	Chiave di codifica KIM-52 1127 (LPG)	Codeerstekker KIM-52 1127 (LPG)	Kod Anahtar# KIM-52 1127 (LPG)
23	Kodierstecker KIM-07 1122 (NG)	Clé de codage KIM-07 1122 (NG)	Chiave di codifica KIM-07 1122 (NG)	Codeerstekker KIM-07 1122 (NG)	Kod Anahtar# KIM-07 1122 (NG)
23	Kodierstecker KIM-51 1126 (LPG)	Clé de codage KIM-51 1126 (LPG)	Chiave di codifica KIM-51 1126 (LPG)	Codeerstekker KIM-51 1126 (LPG)	Kod Anahtar# KIM-51 1126 (LPG)
23	Kodierstecker KIM-54 1169 (NG)	Clé de codage KIM-54 1169 (NG)	Chiave di codifica KIM-54 1169 (NG)	Codeerstekker KIM-54 1169 (NG)	Kod Anahtar# KIM-54 1169 (NG)
23	Kodierstecker KIM-23 1172 (LPG)	Clé de codage KIM-23 1172 (LPG)	Chiave di codifica KIM-23 1172 (LPG)	Codeerstekker KIM-23 1172 (LPG)	Kod Anahtar# KIM-23 1172 (LPG)
23	Kodierstecker KIM-53 1168 (NG)	Clé de codage KIM-53 1168 (NG)	Chiave di codifica KIM-53 1168 (NG)	Codeerstekker KIM-53 1168 (NG)	Kod Anahtar# KIM-53 1168 (NG)
23	Kodierstecker KIM-22 1171 (LPG)	Clé de codage KIM-22 1171 (LPG)	Chiave di codifica KIM-22 1171 (LPG)	Codeerstekker KIM-22 1171 (LPG)	Kod Anahtar# KIM-22 1171 (LPG)
24	Zündtrafo	Transformateur d'allumage	Trasformatore d'accensione	Ontstekingstransformator	Ate°leme Trafosu
24	Transformator	Transformateur	Trasformatore primario	Transformator	Transformatör
25	Halter	Support	Angolare	steunbeugel	BRACKET
26	Halter	Support	Angolare	steunbeugel	BRACKET
27	Kabelbaum 230V	Faisceau de câbles	Cablaggio	Kabelboom	Kablo demeti
27	Kabelbaum HV	Faisceau de câbles HV	Cablaggio HV	Kabel set HV	Kablo Demeti HV
28	Zündkabel	FAISCEAU ELECTRODES	Cavetto accensione	Hoogspanningsleiding	Ate°leme Kablosu
29	Kabelbaum	Faisceau de cables GB072k 24kw	Cablaggio	Kabelboom	Kablo Demeti
29	Kabelbaum 24V	Faisceau de câbles	Cablaggio	Kabelboom	Kablo Demeti
29	Kabelbaum	Faisceau des câbles	Cablaggio	Kabel set	Kablo Demeti
30	Netzkabel	Cordon branchement reseau	Cavo di rete	Netkabel	°ebeke Kablosu
32	Halter	Support	Supporto	steun	Tutucu Spark igniter
33	Schraube M4x6 (10x)	Vis M4x6 (10x)	Vite M4x6 (10x)	Schroef M4x6 (10x)	C#vata M4x6 (10x)
	Fluessigg.-Umbausatz 3P GB072/172-24K	KIT DE CONVERSION PROPANE GB072 24K	Kit conversione gasNG->LPG GB072/172-24K	Gasombouwset NG-->LPG GB072/172-24K	Gaz dönüsüm seti NG->LPG GB072/172-24K
	Erdgas-Umbausatz GB072/172-24K	Kit de transfordegazLPG->NGGB072/172-24K	Kit conversione gas LPG->NGGB072/172-24K	Gasombouwset LPG-->NG GB072/172-24K	Gaz dönüsüm seti LPG-->NG GB072/172-24K
	Erdgas-Umbausatz GB072/172-24	Kit de transfor degazLPG->NGGB072/172-24	Kit conversione gas LPG->NG GB072/172-24	Gasombouwset LPG-->NG GB072/172-24	Gaz dönüsüm seti LPG-->NG GB072/172-24
	Fluessigg.-Umbausatz 3P GB072/172-24	KIT DE CONVERSION PROPANE GB072 24	Kit conversione gas NG->LPG GB072/172-24	Gasombouwset NG-->LPG GB072/172-24	Gaz dönüsüm seti NG-->LPG GB072/172-24
	Erdgas-Umbausatz GB072/172-20	Kit de transfor degazLPG->NGGB072/172-20	Kit conversione gas LPG->NG GB072/172-20	Gasombouwset LPG-->NG GB072/172-20	Gaz dönüsüm seti LPG-->NG GB072/172-20
	Fluessigg.-Umbausatz 3P GB072/172-20	Kit de transfor degazNG->LPGGB072/172-20	Kit conversione gas NG->LPG GB072/172-20	Gasombouwset NG-->LPG GB072/172-20	Gaz dönüsüm seti NG->LPG GB072/172-20
	Erdgas-Umbausatz GB072/172-14	Kit de transfor degazLPG->NGGB072/172-14	Kit conversione gas LPG->NG GB072/172-14	Gasombouwset LPG-->NG GB072/172-14	Gaz dönüsüm seti LPG-->NG GB072/172-14

**List of translations
Übersetzungsliste**

**Liste des traductions
Traduzione delle descrizioni**

**Vertalinglijst
Ceviri Listesi**

Pos	Beschreibung	Denomination	Descrizione	Benaming	Acıklamalar
	Fluessigg.-Umbauset 3P GB072/172-14	KIT CONVERSION PROPANE GB072 14KW	Kit conversione gasNG->LPG GB072/172-14	Gasombouwset NG-->LPG GB072/172-14	Gaz dönüsüm seti NG->LPG GB072/172-14
	Fluessigg.-Umbauset 3P GB072/172-24	KIT DE CONVERSION PROPANE GB072 24	Kit conversione gas NG->LPG GB072/172-24	Gasombouwset NG-->LPG GB072/172-24	Gaz dönüsüm seti NG-->LPG GB072/172-24
	Erdgas-Umbausatz GB072/172-24	Kit de transfor degazLPG- >NGGB072/172-24	Kit conversione gas LPG->NG GB072/172-24	Gasombouwset LPG-->NG GB072/172-24	Gaz dönüsüm seti LPG-->NG GB072/172-24
	Fluessigg.-Umbauset 3P GB072/172-24K	KIT DE CONVERSION PROPANE GB072 24K	Kit conversione gasNG->LPG GB072/172-24K	Gasombouwset NG-->LPG GB072/172-24K	Gaz dönüsüm seti NG->LPG GB072/172-24K
	Erdgas-Umbausatz GB072/172-24K	Kit de transfor degazLPG- >NGGB072/172-24K	Kit conversione gas LPG- >NGGB072/172-24K	Gasombouwset LPG-->NG GB072/172-24K	Gaz dönüsüm seti LPG-->NG GB072/172-24K
	Erdgas-Umbausatz GB072/172-14	Kit de transfor degazLPG- >NGGB072/172-14	Kit conversione gas LPG->NG GB072/172-14	Gasombouwset LPG-->NG GB072/172-14	Gaz dönüsüm seti LPG-->NG GB072/172-14
	Erdgas-Umbausatz GB072/172-20	Kit de transfor degazLPG- >NGGB072/172-20	Kit conversione gas LPG->NG GB072/172-20	Gasombouwset LPG-->NG GB072/172-20	Gaz dönüsüm seti LPG-->NG GB072/172-20
	Fluessigg.-Umbauset 3P GB072/172-14	KIT CONVERSION PROPANE GB072 14KW	Kit conversione gasNG->LPG GB072/172-14	Gasombouwset NG-->LPG GB072/172-14	Gaz dönüsüm seti NG->LPG GB072/172-14
	Fluessigg.-Umbauset 3P GB072/172-20	Kit de transfor degazNG- >LPGGB072/172-20	Kit conversione gas NG->LPG GB072/172-20	Gasombouwset NG-->LPG GB072/172-20	Gaz dönüsüm seti NG->LPG GB072/172-20

Types of appliances Gerätetypen	Types de chaudières Tipo apparecchi	Toesteltypes Cihaz Cesitleri	Remarks Bemerkungen Remarques Osservazioni Opmerkingen Notlar
Appliance Gerät Chaudière Apparecchio Toestel Cihaz	Ordering no. Bestell-Nr. Numéro de commande N° d'ordine Bestelnummer Ordering no.	Country Land Pays Paese Land Ulke	
GB072-24K V2	7 736 900 556	Austria,Romania	
GB072-14 G23	7 736 900 563	Austria,Slovenia	
GB072-14,G23	7 736 900 004	Austria,Slovenia	
GB072-24 G23	7 736 900 561	Austria,Slovenia	
GB072-24,G23	7 736 900 006	Austria,Slovenia	
GB072-24K G23	7 736 900 562	Austria,Slovenia	
GB072-24K,G23	7 736 900 007	Austria,Slovenia	
GB072-24	7 736 900 049	Belgium	
GB072-24 V2,G23,"BE	7 736 900 539	Belgium	
GB072-24K	7 736 900 050	Belgium	
GB072-24K V2,G23,"BE	7 736 900 538	Belgium	
GB072-24 G23	7 736 900 542	Bosnia and Herzegovina,Croatia	
GB072-24K G23	7 736 900 541	Bosnia and Herzegovina,Croatia	
GB072-24	7 716 010 454	Bosnia and Herzegovina,Croatia,Serbia	
GB072-24K	7 716 010 443	Bosnia and Herzegovina,Croatia,Serbia	
GB072-14	7 716 010 444	Croatia	
GB072-20	7 716 010 445	Croatia	
GB072-24/24K	7 716 010 442	Croatia	
GB072-14	7 736 900 061	Czechia	
GB072-14 G23	7 736 900 545	Czechia	
GB072-24	7 736 900 062	Czechia	
GB072-24 G23	7 736 900 543	Czechia	
GB072-24K	7 736 900 063	Czechia	
GB072-24K G23	7 736 900 544	Czechia	
GB072-14	7 716 010 439	Estonia,Latvia,Lithuania	
GB072-24	7 716 010 441	Estonia,Latvia,Lithuania	
GB072-24 G23	7 736 900 549	Estonia,Latvia,Lithuania	
GB072-24K	7 716 010 438	Estonia,Latvia,Lithuania	
GB072-24K G23	7 736 900 548	Estonia,Latvia,Lithuania	
GB072-14	7 736 900 078	France	
GB072-24	7 736 900 079	France	
GB072-24K	7 716 010 423	France	

Types of appliances Gerätetypen	Types de chaudières Tipo apparecchi	Toesteltypes Cihaz Cesitleri	Remarks Bemerkungen Remarques Osservazioni Opmerkingen Notlar
Appliance Gerät Chaudière Apparecchio Toestel Cihaz	Ordering no. Bestell-Nr. Numéro de commande N° d'ordine Bestelnummer Ordering no.	Country Land Pays Paese Land Ulke	
GB072-24	7 736 900 065	Greece	
GB072-24 G23	7 736 900 547	Greece	
GB072-24K	7 736 900 066	Greece	
GB072-24K G23	7 736 900 546	Greece	
GB072-20	7 716 010 440	Latvia	
GB072-14	7 716 010 430	Poland	
GB072-14 G23	7 736 900 555	Poland	
GB072-20	7 716 010 431	Poland	
GB072-20 G23	7 736 900 554	Poland	
GB072-24	7 716 010 432	Poland	
GB072-24 G23	7 736 900 552	Poland	
GB072-24/24K	7 716 010 428	Poland	
GB072-24K	7 716 010 429	Poland	
GB072-24K G23	7 736 900 553	Poland	
GB072-24	7 736 900 059	Romania	
GB072-24 V2	7 736 900 557	Romania	
GB072-24K	7 736 900 060	Romania	
GB072-14	7 716 010 460	Slovakia	
GB072-14 G23	7 736 900 559	Slovakia	
GB072-20	7 716 010 461	Slovakia	
GB072-24	7 716 010 462	Slovakia	
GB072-24 G23	7 736 900 558	Slovakia	
GB072-24K	7 716 010 459	Slovakia	
GB072-24K G23	7 736 900 560	Slovakia	
GB072-24	7 736 900 041	Turkey	
GB072-24K	7 736 900 042	Turkey	
GB072-24K G23	7 736 900 564	Turkey	

Bosch Thermotechnik GmbH
Sophienstr. 30-32
D-35576 Wetzlar / Germany

Buderus